

ST. JOSEPH'S HEALTH & NJCDC/NJCC



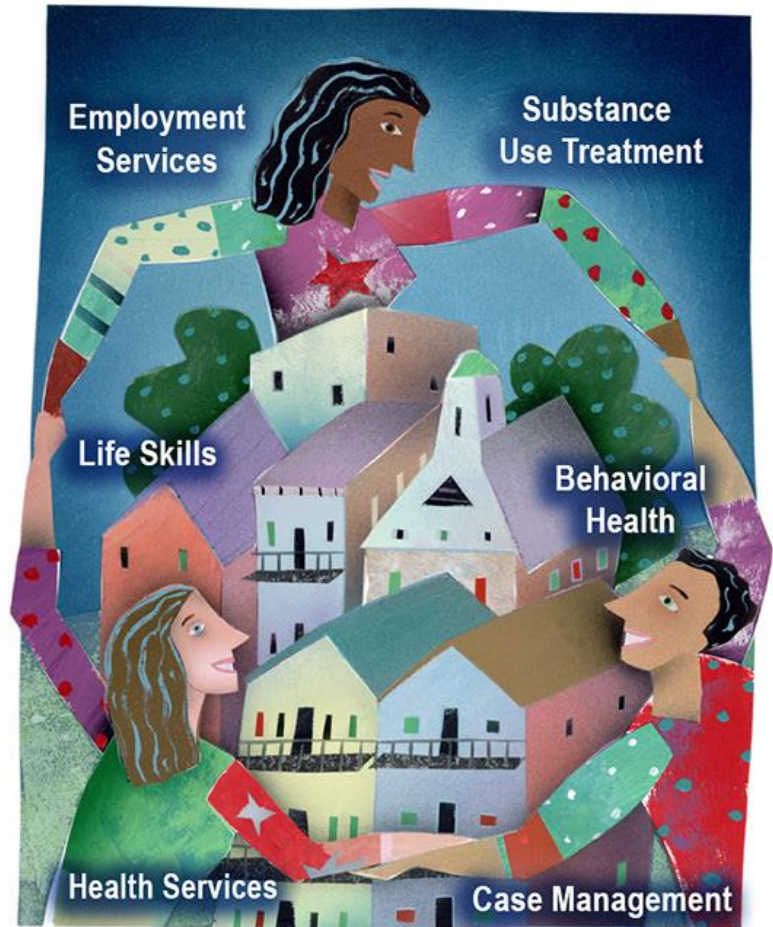
BARCLAY STREET HOUSING

PATERSON

NJ

COMMUNITY DEVELOPMENT & HEALTH

- PARTNERSHIP BETWEEN SJH, NJCDC AND NJCC (CAPC)
- 71 NEW AFFORDABLE HOMES (MIX OF BR'S)
- 10 UNITS FOR INDIVIDUALS WITH SPECIAL NEEDS
- DESIGN AND ON-SITE SOCIAL SERVICES TO ADDRESS SOCIAL DETERMINANTS OF HEALTH
- REDEVELOPMENT OF VACANT PARCEL



HEALTHY HOMES

- ❑ NEW CONSTRUCTION
- ❑ UNIVERSAL DESIGN FOR RANGE OF TENANTS
 - ❑ TOXIN FREE FINISHES, ACCESSIBILITY, HANDRAILS AND ENERGY EFFICIENT APPLIANCES
- ❑ ON-SITE SOCIAL, HEALTH AND WELLNESS SERVICES
- ❑ PROXIMITY TO MEDICAL CENTER



ON-SITE SERVICES



- 5,000 SF PROGRAM/SERVICE AREA
- FAMILY REUNIFICATION
- AGING IN PLACE
- CASE MANAGEMENT
- SOCIAL, HEALTH AND WELLNESS WORKSHOPS
- NAVIGATION SERVICES TO LINK TENANTS TO RANGE OF PROVIDERS

NEIGHBORHOOD REVITALIZATION



PROJECT OVERVIEW

- 71-UNITS
 - 18 1-BR'S
 - 38 2-BR'S
 - 15 3-BR'S
 - (INCLUDES 10 UNITS FOR SPECIAL NEEDS)

□ CAPITAL STACK

HMFA HOSPITAL PROGRAM	\$3,400,000
SJH PROGRAM MATCH	\$3,400,000
SPECIAL NEEDS HOUSING	\$1,000,000
LIHTC (4%) PROCEEDS	\$9,163,116
HMFA NOTE	\$4,500,000
OTHER GRANTS (FHLB/HOME)	\$510,103
DEFERRED DEV FEE	\$1,428,669
	\$23,401,888

