

# Supportive Employment Trends and Opportunities



SHAN<sub>NJ</sub>

8.2.17

# Changing the Lives of People with Disabilities

Kessler Foundation is a global leader in **REHABILITATION RESEARCH** and **EMPLOYMENT FUNDING**.

Our mission is to **CHANGE** the **LIVES** of **PEOPLE** with **DISABILITIES**.

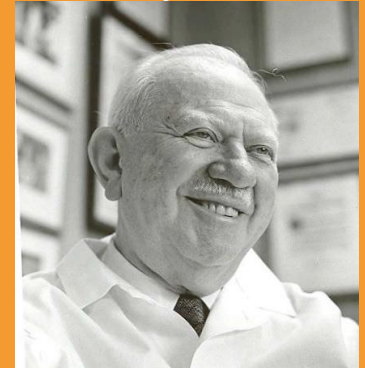
Our scientists **RESTORE FUNCTION** through research, improving **COGNITION** and **MOBILITY** for people with traumatic brain injury, spinal cord injury, stroke, MS, and cancer.

Philanthropy provides the energy to **JUMPSTART INNOVATION**.

Our research and funding **RETURN PEOPLE** to their **HOMES**, their **COMMUNITIES**, and the **WORKPLACE**.

After serving in World War II, Dr. Kessler founded Kessler Institute for Rehabilitation "...to treat the whole individual ...to help him or her successfully regain physical, mental, social, vocational and economic usefulness to the fullest possible degree."

*Dr. Henry H. Kessler*



# Putting People with Disabilities to Work



**Only 20%**

Of the 56 million Americans with disabilities only 20% of the working age population is employed

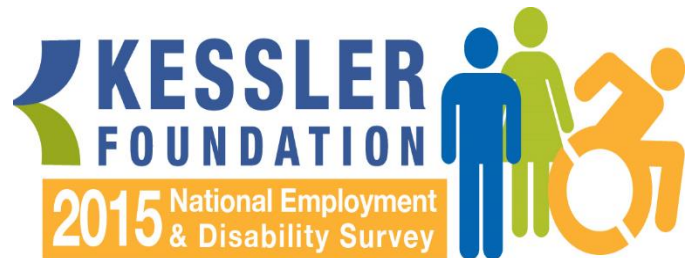


**40%** of beneficiaries want to get off benefits

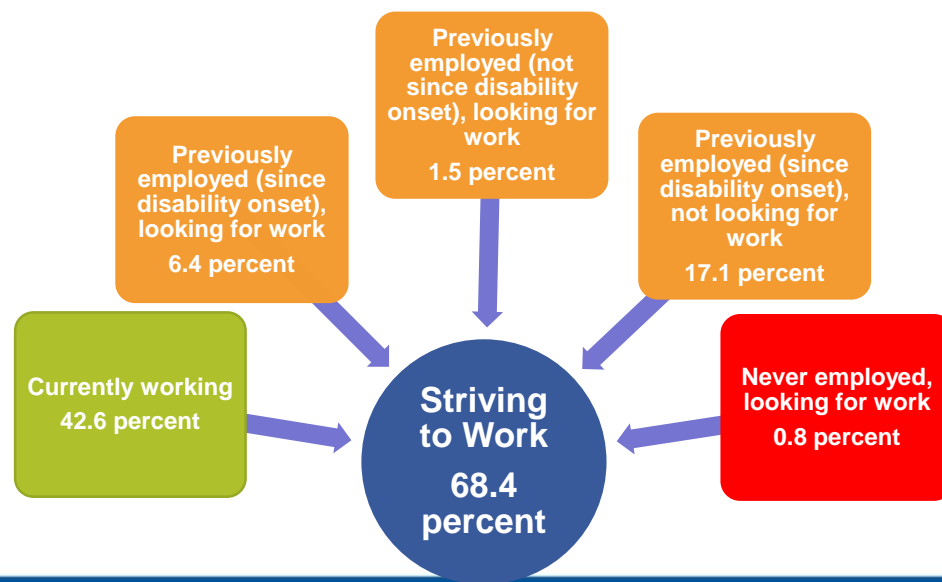
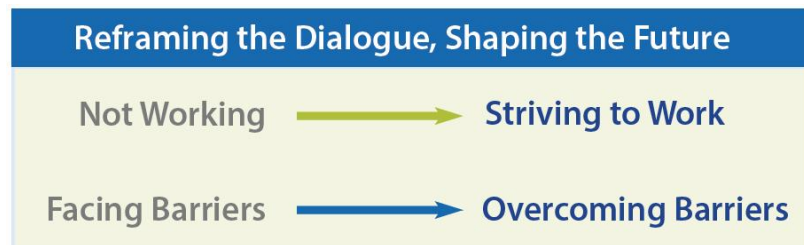


**\$200,000**

Getting one person off benefits saves more than \$200,000



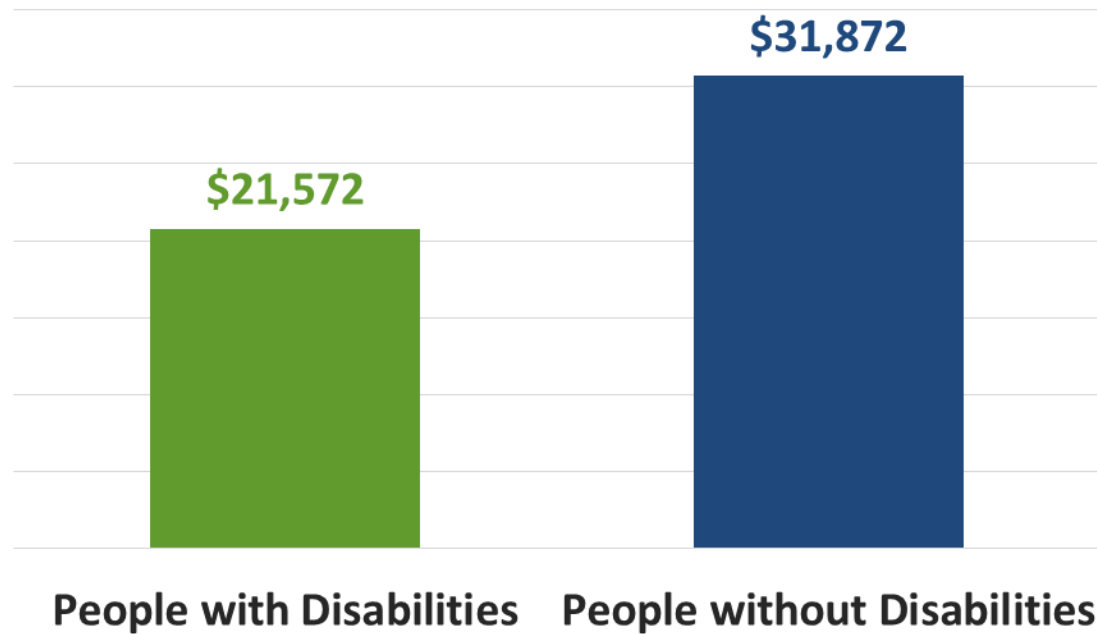
The key finding of the 2015 Kessler Foundation National Employment and Disability Survey is that Americans with disabilities are striving to work. They are working, actively preparing for employment, searching for jobs, seeking more hours, and successfully overcoming barriers in the workplace.



# Median Wages

## *A Clear Need for Better Opportunities*

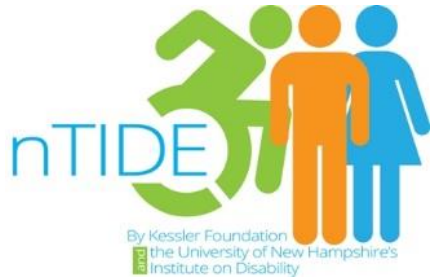
Median Annual Wages/Salary, 2015  
(Ages 16 and older)



Source: Annual Disability Statistics Compendium, Table 5.1. using Census Bureau data



# Tracking Progress: nTIDE

## *national Trends In Disability Employment*



### national Trends In Disability Employment: Comparison of People With and Without Disabilities (June 2016 and June 2017)



JUNE 2017	Labor Force Participation Rate			Employment-Population Ratio		
		June '16	June '17		June '16	June '17
		32.1	33.0	28.1	29.8	% change ↑ 2.8
	76.9	77.3	73.2	73.9	% change ↑ 0.5	% change ↑ 1.0

\* PWD – People with disabilities; PWOD – People without disabilities

Source: Kessler Foundation/University of New Hampshire Institute on Disability

# Bridges to Employment

## A School-to-Work Transition Program







# Make Your Job: Empowering Individuals with Disabilities”

