

Integrated Community Project

SHA NJ Member Meeting

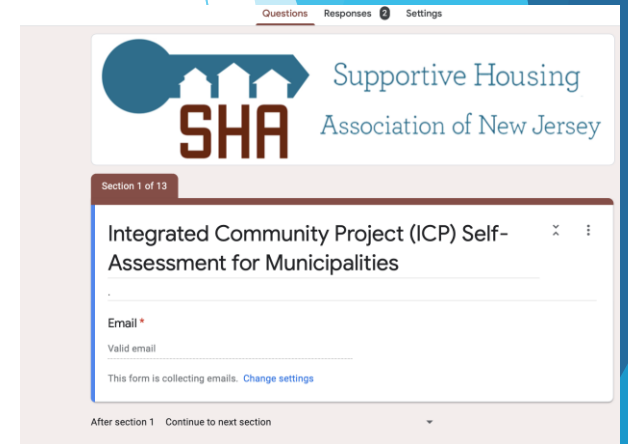
February 2, 2022

Integrated Community Project

Integrated Community Project (ICP) Self-Assessment

Phase III of Project

- Working in final phase of ICP through June 2022
- In December 2021, developed ICP Municipal Self-Assessment covering seven themes that came out of ICP Focus Groups
- Since beginning of January 2022, have had successful and informative meetings with four of nine identified municipalities
- Will create ICP Toolkit



The screenshot shows a web-based form titled "Integrated Community Project (ICP) Self-Assessment for Municipalities" from the Supportive Housing Association of New Jersey (SHA). The form is currently on "Section 1 of 13". It features a header with the SHA logo and the text "Supportive Housing Association of New Jersey". Below the header, there is a title bar for the form, followed by an "Email *" field with a "Valid email" label and a "This form is collecting emails. Change settings" link. At the bottom of the form, there is a navigation bar with "After section 1" and "Continue to next section" options.

Integrated Community Project

Integrated Community Project (ICP) Self-Assessment Municipalities Selected for Self-Assessment

Bergen County

- Allendale*
- Hackensack
- Teaneck*

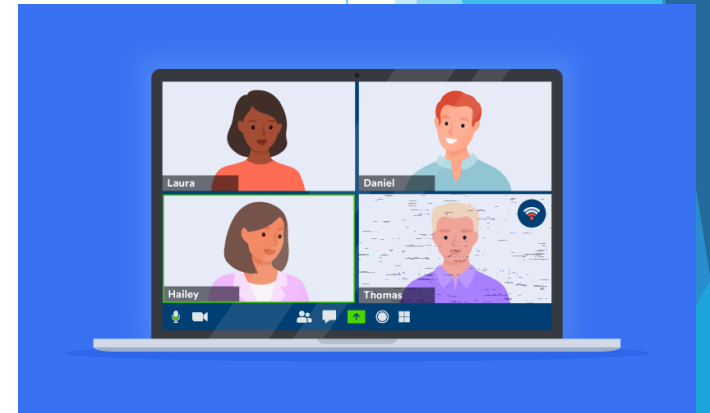
Camden County

- Camden
- Cherry Hill*

- Winslow

Ocean County

- Jackson
- Point Pleasant
- Toms River*



*Municipalities that have taken ICP Self-Assessment

Integrated Community Project

Integrated Community Project (ICP) Self-Assessment

Can you help us connect with remaining targeted municipalities?

- Camden
- Jackson
- Point Pleasant
- Winslow



Integrated Community Project

For more information about the ICP:

Contact Kate Kelly, Integrated Community Project Manager
at kate.Kelly@shanj.org



Housing Navigation Project

Kate Leahy

Housing Navigation Project Manager

Housing Navigation Project

Project Overview

- DCA Innovation Grant
- 18-month Project Beginning January 2022
- Goals

Bridge a gap that will bring greater access to affordable housing to those most economically challenged in New Jersey.

Aims to strengthen services that connect people with available housing and the capacity for program coordination throughout the state.



Housing Navigation Project

The project encompasses a three-part approach:

- **Phase 1: Best Practice Research**

Housing Navigation Best Practices Report, Library and Toolkit based on both nationwide and local research.

Focus Groups to examine barriers to service delivery through the eyes of people with lived experience.

- **Phase 2: Multi-sector stakeholder collaborative**

Develop stakeholder collaborative to examine research in effort to identify promising innovations and develop guidelines that will improve service delivery

- **Phase 3: Implementation for Sustainable Change**

Develop and implementation strategy and recommendation for sustainable change that include funding, reporting and training.

National Research Housing Navigation Project

Shelley Samuels, MPA - Principal

SRS Strategic Associates, LLC

ssamuels@srsstrategic.com

www.srsstrategic.com

732-673-2472

SRS Strategic
Associates, LLC

Housing Navigation Project

Tell us about your housing navigation services

Reach out for more information on the project

Contact Kate Leahy, Housing Navigation Project Manager at
Kate.Leahy@shanj.org