

# **Integrated Community Project**

**SHA NJ Member Meeting**

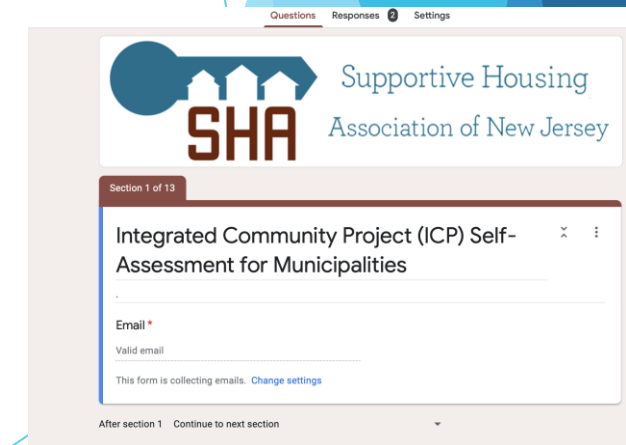
**April 6, 2022**

# Integrated Community Project

## Integrated Community Project (ICP) Self-Assessment

Phase III of Project - Final phase of ICP

- Municipal Self-Assessment Meetings
- Toolkit for Municipalities



The screenshot shows a web-based form titled "Integrated Community Project (ICP) Self-Assessment for Municipalities". At the top, there is a navigation bar with "Questions", "Responses", and "Settings" links. Below this is the logo for the Supportive Housing Association of New Jersey (SHA), which consists of a stylized house icon and the letters "SHA". The form itself is titled "Section 1 of 13" and contains a single input field labeled "Email \*". Below the input field, there is a "Valid email" label and a note stating "This form is collecting emails. [Change settings](#)". At the bottom of the form, there is a button labeled "After section 1 Continue to next section".

# Integrated Community Project

## Integrated Community Project (ICP) Self-Assessment Municipalities (to date)

### Bergen County

- Allendale
- Hackensack
- Teaneck

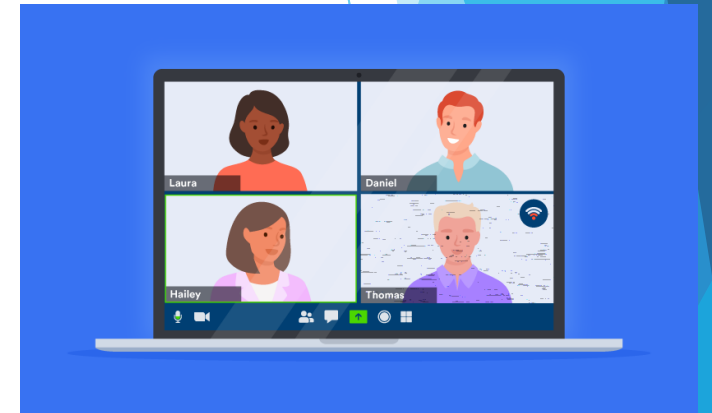
### Camden County

- Camden\*
- Cherry Hill

- Collingswood\*

### Ocean County

- Lacey
- Lakewood
- Toms River



\*ICP Self-Assessment Meetings to be Scheduled

# Integrated Community Project

## Integrated Community Project (ICP) Toolkit for Municipalities

- Tools to include case studies, known best practices, emerging practices recorded webinars, articles, checklists and other resources
- Share with municipalities throughout New Jersey



# Integrated Community Project

## Integrated Community Project (ICP) Toolkit for Municipalities

Phase III of Project Future Work - April-June 2022

- Continued promotion of toolkit to municipalities throughout New Jersey
- Celebration of success of project



# Integrated Community Project

For more information about the ICP:

Contact Kate Kelly, Integrated Community Project Manager  
at [kate.Kelly@shanj.org](mailto:kate.Kelly@shanj.org)



# Housing Navigation Project

# Housing Navigation Project

## Project Overview

- DCA funded, 18-month long grant that SHA was awarded in January designed to bridge a gap that will bring greater access to affordable housing to those most economically challenged in New Jersey.
- Aims to strengthen services that connect people with available housing and the capacity for program coordination throughout the state.



# Housing Navigation Project

## Project Overview

The project encompasses a three-part approach:

- **Phase 1:** Production of a Housing Navigation Best Practices Report, Library and Toolkit based on both nationwide and local research. This will include an examination of barriers to service delivery through the eyes of people with lived experience.
- **Phase 2:** The development of a multi-sector stakeholder collaborative, including organizations that currently provide or that are planning to provide housing navigation for vulnerable individuals, to examine successful strategies extracted from the research as the basis for a shared approach to sustainable change. The Housing Navigator Collaborative will help establish pooled resources, coordinated services and sustainable partnerships that can be applied to improve housing access.
- **Phase 3:** With the Collaborative, develop and implement recommendations in the areas of funding, procedure and policy improvements to guide planning leading to increased availability of affordable housing.

# Housing Navigation Project

## Phase 1: Research and Review Best Practices and Survey Current NJ Landscape

- National-level research: Shelley Samuels of SRS Strategic Associates is leading the national research portion.
- Shelley and our SHA team put together a questionnaire about housing navigation service delivery. The questionnaire will be used to guide interviews and as a stand alone tool.
- Interviews have been scheduled and completed with NY and AZ
- 448 questionnaires were sent out this week.
- We are looking forward to learning more from others throughout the nation over the coming weeks!

# Housing Navigation Project

## Phase 1: Research and Review Best Practices and Survey Current NJ Landscape

### State-Level Research:

- The SHA team has spoken with groups from a range of counties and programs throughout the state and have gained a deeper understanding of housing navigation services being offered.
- Focus groups with individuals who have experienced homelessness and been on the receiving end of housing navigation services started this week and will continue throughout the month.
- We are currently recruiting for focus groups. If you have clients, we'd love to invite them to join.

# Housing Navigation Project

For more information on the Housing Navigation Project:

Contact Kate Leahy, Housing Navigation Project Manager at [Kate.Leahy@shanj.org](mailto:Kate.Leahy@shanj.org)